

## Type C - Seal Replacement Instructions

1)



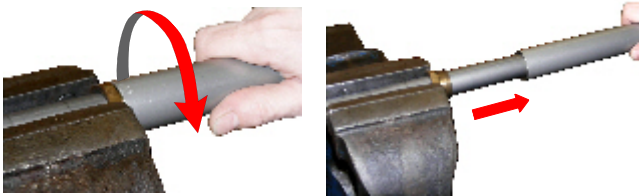
Grip the pump body and spin off the handle (anticlockwise). Using the spanner flats and suitable size spanner, unscrew the handle connector.

2)



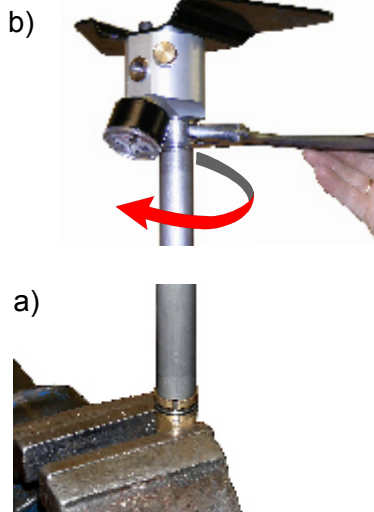
Stand pump on its base, lift the handle connector to expose the piston rod and using a needle, or other small dowel, push out the location pin. Take care not to loose this pin. The handle connector can then be removed from the inner rod together with the small o'ring.

3)



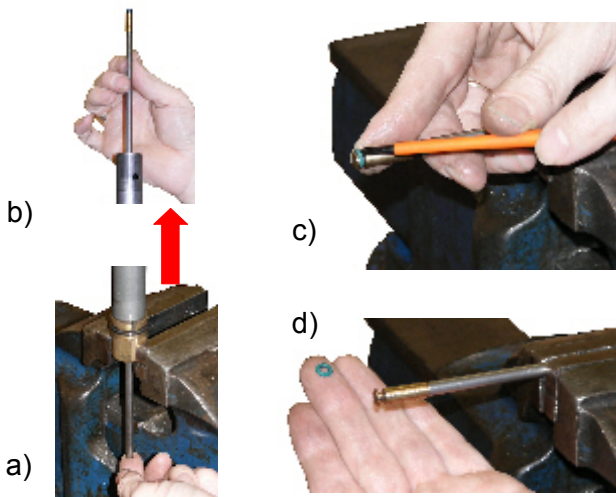
Using the vice, gently clamp the brass gland nut (not the inner tube) at bottom of the painted outer tube. Gripping the tube, unscrew anticlockwise. The painted tube can now be removed from the pump.

4)



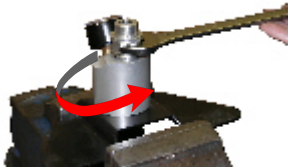
(a) Place the pump upside down into the vice and gently clamp the brass valve (on the flats only) until secure. Do not over tighten.  
(b) Using an adjustable spanner, unscrew the brass hexagon component at the end of the inner tube, unscrew in an anticlockwise direction.  
Using the footplate as leverage, unscrew the base unit and remove.

5)



(a) Push up the inner piston rod and withdraw from tube at top  
(b). Place tube in vice and secure. Do not over tighten  
Note: use a vice with plain faced jaws or protect rod if using a vice with serrated jaws. This rod must not be damaged in any way.  
(c) Carefully remove the o'ring from the piston. Use a small screwdriver to do this and be careful not to damage groove.  
Replace o'ring with new one

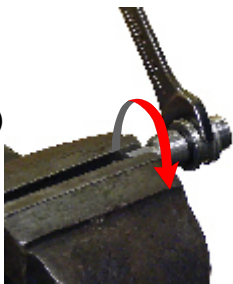
6)



Hold the footplate in the vice and using a suitable spanner unscrew the non return valve from manifold block (anticlockwise) and place to one side. Lift out the filter element from the body of the manifold block and replace with new one. Use long nose pliers if difficult avoiding damage to threads

7)

a)



b)



c)

(a) Clamp the non return valve in vice (on the spanner flats) and unscrew the spring retainer at the end of the valve.

(b) Withdraw the spring and valve component and carefully clean these and the bore of the valve body (a cotton bud is ideal for this) replace valve and o'ring as indicated by arrow (c).

Re-assemble the non return valve

8)



Having cleaned the components and replaced the seals apply a small amount of silicone grease to tube, piston rod, large o'ring and green o'ring on piston.

Best way to do this is to use a small clean paintbrush.

Re-assemble pump in reverse order

Add silicone grease to the inner tube and work in by raising and lowering the handle a few times. (in the same way that you would operate the pump)