

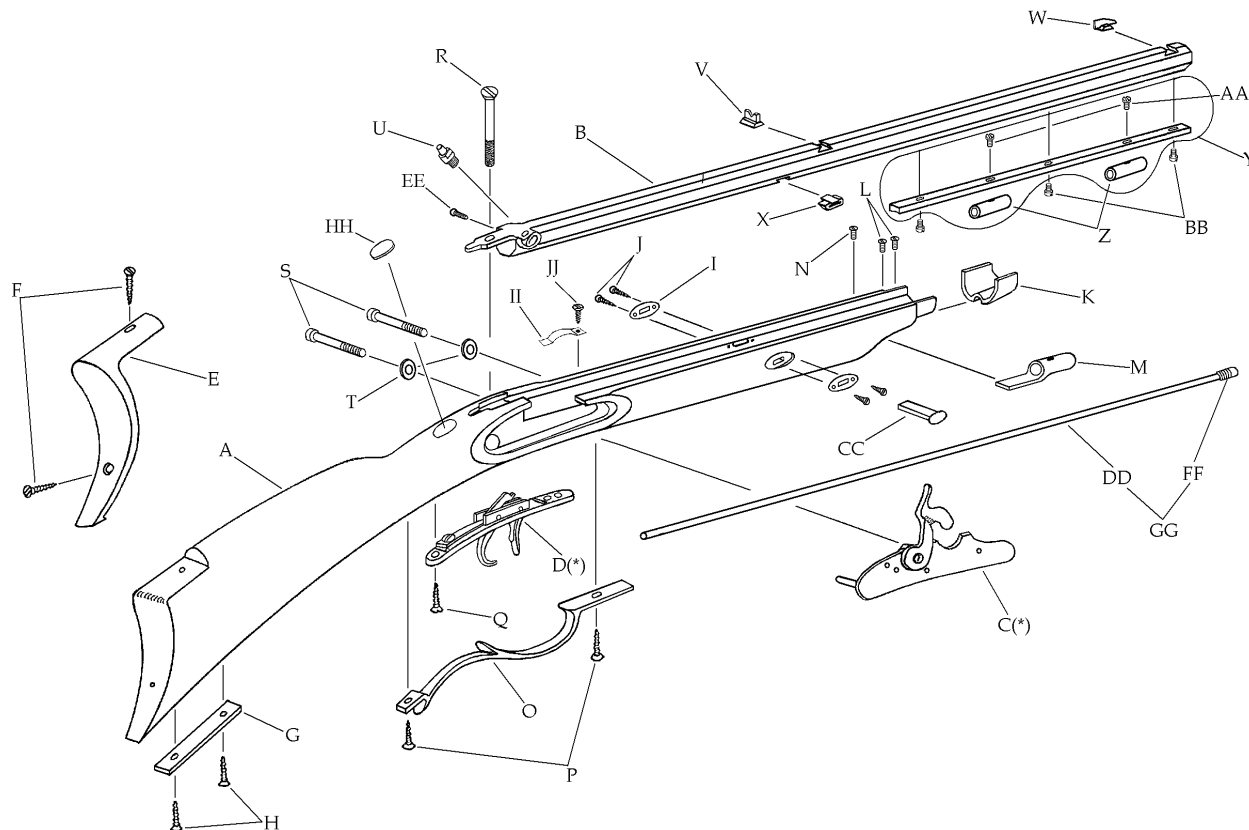
## - Davy Crockett Rifle -

Models:

**R-26128101**

.32 cal. Perc. 1-48"

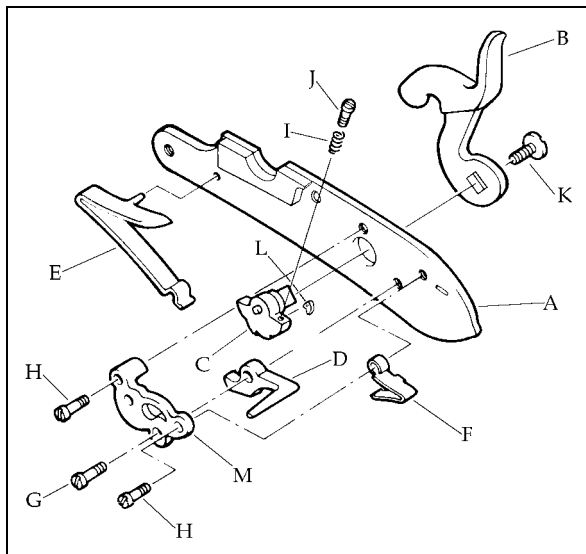
Blued Barrel



Description	Reference	Description	Reference
A Stock Beech (Finished).....	FCS2612801	R Tang Screw.....	12609
B Barrel Assembly (Kit)		S Lock Plate Screw (2).....	20120
.32 cal. perc. (twist 1-48").....	C-261281	T Lock Plate Washer (2).....	20619
Barrel Assembly Blued (Finished)		U Nipple Percussion Only.....	20608
.32 cal. perc. (twist 1-48").....	FB261281	V Rear Sight.....	20210
C Percussion Lock.....	12503	W Front Sight (Brass Blade).....	36011
D Trigger Assembly.....	20622R	X Barrel Tenon.....	20533
E Butt Plate (Brass).....	26226	Y Barrel Rib Assembly.....	FR26012
F Butt Plate Screw (2).....	20627	Z Ramrod Thimble (2) (Brass).....	26213
G Toe Plate (Brass).....	30031	AA Ramrod Thimble Screw (2).....	20614
H Toe Plate Screw (2).....	20624	BB Barrel Rib Screw (3).....	20614
I Wedge Plate (Brass) (2).....	20616L	CC Wedge.....	11418
J Wedge Plate Screw (4).....	20617	DD Ramrod (Aluminum).....	260030
K Nose Cap (Brass).....	26215	EE Tang Screw (Side).....	M131041
L Nose Cap Screw (2).....	20214	FF Ramrod Tip .32 cal.....	26028
M Rear Ramrod Thimble (Brass).....	26214	GG Ramrod Assembly.....	1396
N Rear Ramrod Thimble Screw.....	20839	HH Oval (Brass).....	26209
O Trigger Guard (Brass).....	26223	II Ramrod Retaining Spring.....	400030
P Trigger Guard Screw (2).....	20624	JJ Ramrod Retaining Spring Screw.....	400024
Q Trigger Screw.....	20624		

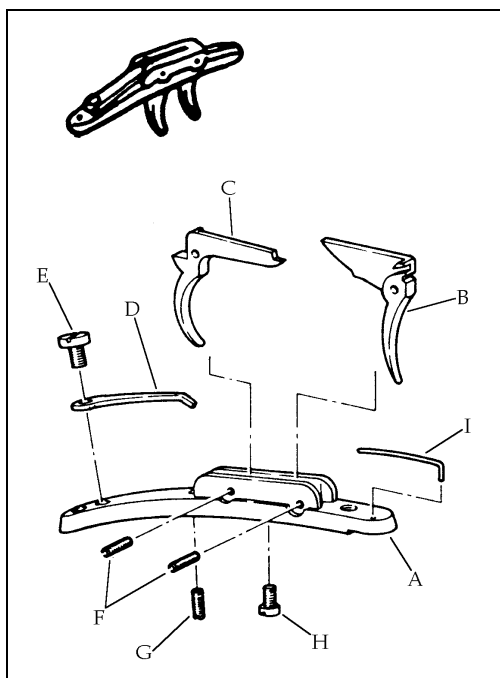
(\*) Exploded view at the reverse.

## Percussion Lock Assembly - Ref. 12503



	Description	Reference
A	Lock Plate.....	70401
B	Hammer.....	70602
C	Tumbler.....	70603
D	Sear.....	70504
E	Mainspring.....	45071
F	Sear Spring.....	70506
G	Sear Screw.....	70514
H	Sear Spring & Bridle Screw (2).....	70515
I	Sear Adjusting Screw Spring.....	70520
J	Sear Adjusting Screw.....	70518
K	Hammer Screw.....	75512P
L	Fly.....	M70611
M	Bridle.....	70508

## Trigger Assembly - Ref. 20622R



	Description	Reference
A	Trigger Plate.....	60601R
B	Front Trigger.....	60602
C	Rear Trigger.....	60603
D	Rear Spring.....	60604R
E	Rear Spring Screw.....	60606
F	Trigger Pin (2).....	60609
G	Rear Trigger Adjustment Screw.....	60608
H	Front Trigger Adjustment Screw.....	60607
I	Front Spring.....	60605