

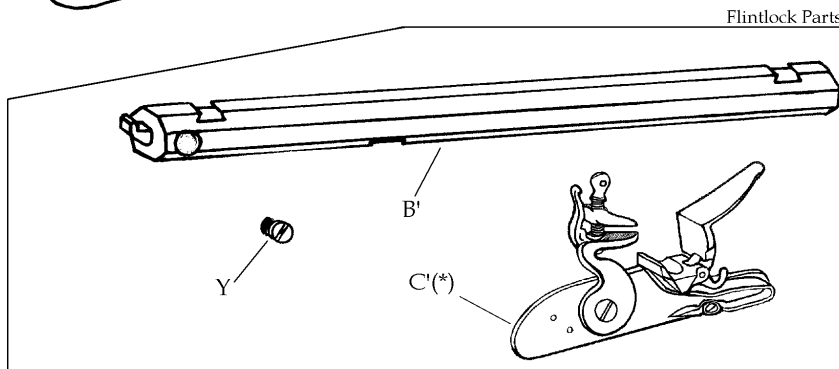
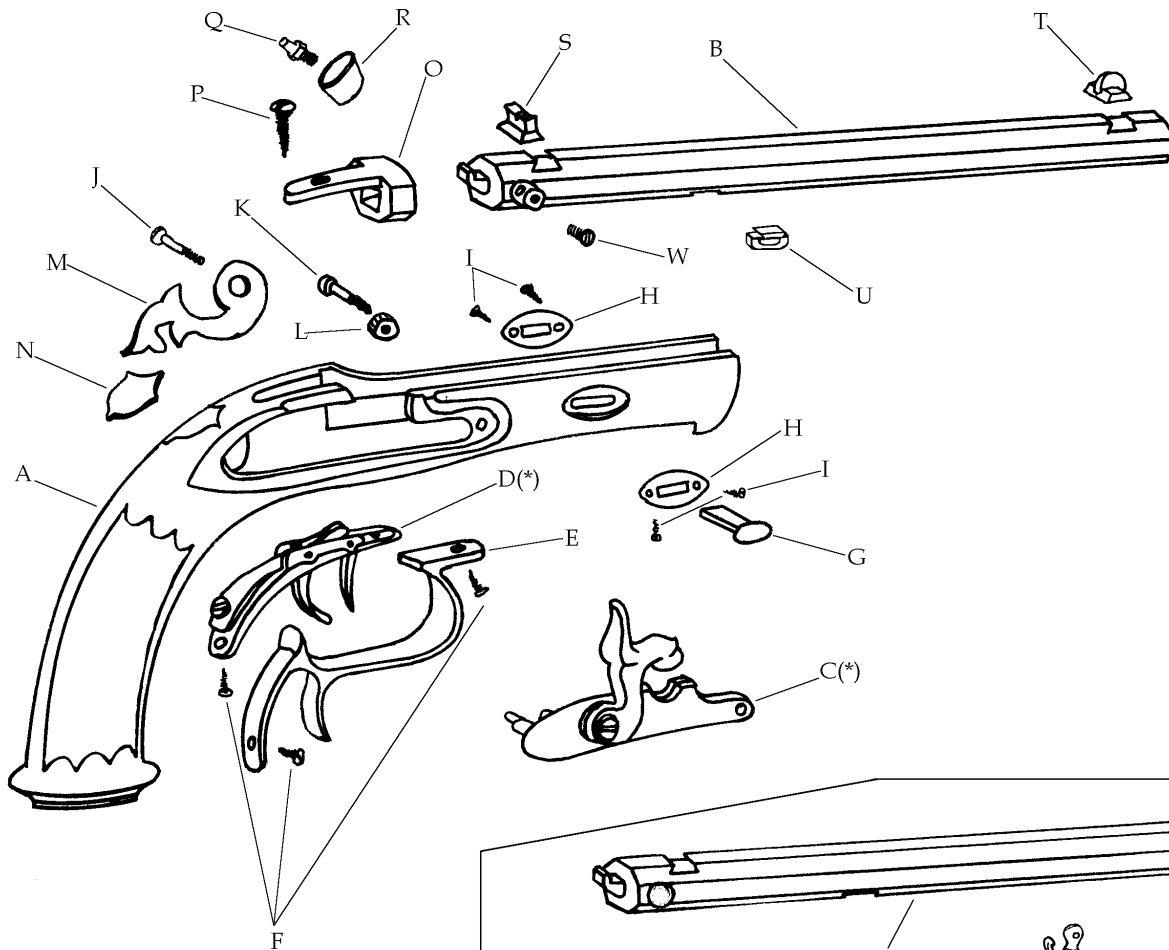
## - William Parker of London Pistol -

Models: P-1135

P-1145

.45 cal. flint. 1-16"  
White Temper Barrel

.45 cal. perc. 1-16"  
White Temper Barrel



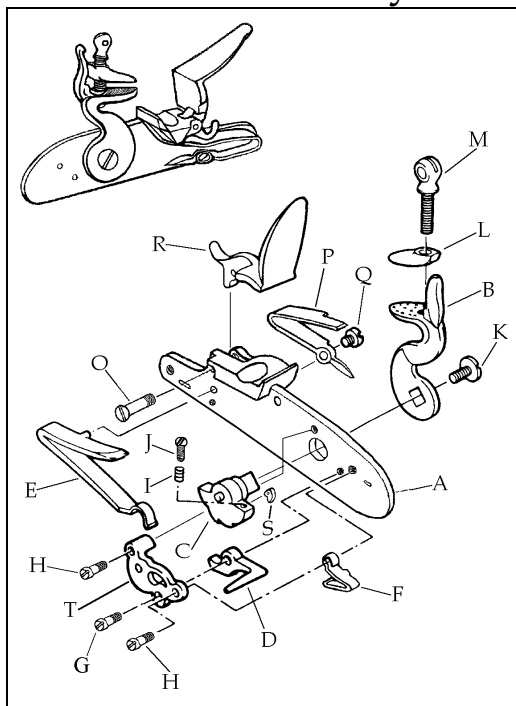
Flintlock Parts

Description	Reference	Description	Reference
A Stock Walnut (Flintlock) (Finished).....	FCS11301	H Wedge Plate (2).....	20616L
Stock Walnut (Percussion) (Finished).....	FCS11401	I Wedge Plate Screw (4).....	20617
B Barrel Assembly (Kit)		J Rear Lock Screw.....	20820T
.45 cal. perc. (twist 1-16").....	C-114025	K Rear Lock Screw.....	11420T
Barrel Assembly White Temper (Finished)		L Stock Bushing.....	20840T
.45 cal. perc. (twist 1-16").....	FB114025	M Stock Plate (Brass).....	20816
B' Barrel Assembly (Kit)		N Stock Shield (Brass).....	11438
.45 cal. flint. (twist 1-16").....	C-113025	O Barrel Tang.....	20606T
Barrel Assembly White Temper (Finished)		P Tang Screw.....	20209T
.45 cal. flint. (twist 1-16").....	FB113025	Q Nipple Percussion Only.....	20608
C Percussion Lock.....	11403	R Flash Cup (Brass) Percussion Only.....	11439L
C' Flintlock.....	23503T	S Rear Sight.....	20210T
D Trigger Assembly.....	20622T	T Front Sight.....	11411
E Trigger Guard (Brass).....	11023	U Barrel Tennon.....	M20533
F Trigger Guard Screw (3).....	20624T	W Bolster Screw Percussion Only.....	20605T
G Wedge.....	11418	Y Flash Hole Liner Flintlock Only.....	20534

(\*) Exploded view at the reverse.

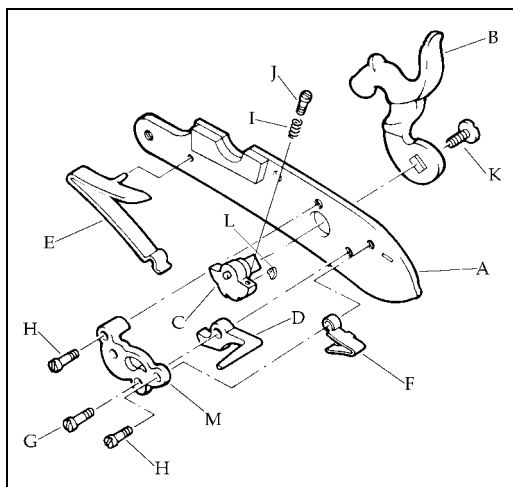
# TRADITIONS™

## Flintlock Assembly – Ref 23503T



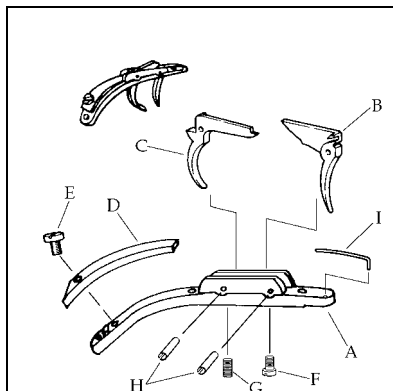
	Description	Reference
A	Lock Plate.....	70623T
B	Hammer.....	70624T
C	Tumbler.....	70603
D	Sear.....	70504
E	Mainspring.....	70505
F	Sear Spring.....	70506
G	Sear Screw.....	70514
H	Sear Spring & Bridle Screw (2).....	70515
I	Sear Adjusting Screw Spring.....	70520
J	Sear Adjusting Screw.....	70518
K	Hammer Screw.....	75512P
L	Top Jaw.....	70309T
M	Top Jaw Screw.....	70513L
O	Frizzen Screw.....	70627
P	Frizzen Spring.....	70625
Q	Frizzen Spring Screw.....	70628
R	Frizzen.....	70626
S	Fly.....	70611
T	Bridle.....	70508

## Percussion Lock Assembly - Ref. 11403



	Description	Reference
A	Lock Plate.....	71401
B	Hammer.....	70602T
C	Tumbler.....	70603
D	Sear.....	70504
E	Mainspring.....	70505
F	Sear Spring.....	70506
G	Sear Screw.....	70514
H	Sear Spring & Bridle Screw (2).....	70515
I	Sear Adjusting Screw Spring.....	70520
J	Sear Adjusting Screw.....	70518
K	Hammer Screw.....	75512P
L	Fly.....	70611
M	Bridle.....	70508

## Trigger Assembly - Ref. 20622T



	Description	Reference
A	Trigger Plate.....	60601T
B	Front Trigger.....	60602
C	Rear Trigger.....	60603
D	Rear Spring.....	60604P
E	Rear Spring Screw.....	60606
F	Front Trigger Adjustment Screw.....	60607
G	Rear Trigger Adjustment Screw.....	60608
H	Trigger Pin (2).....	60609
I	Front Spring.....	60605