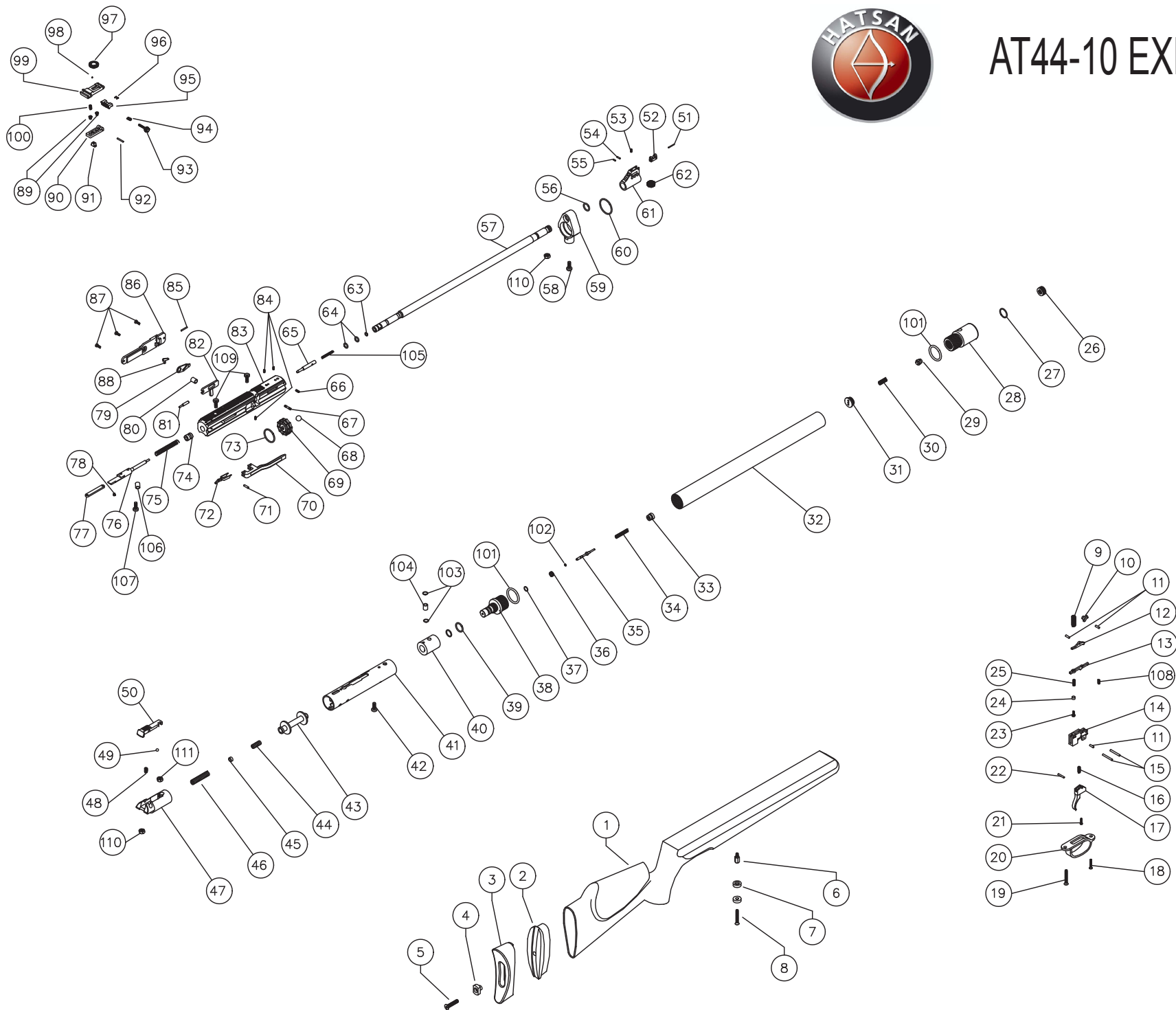




AT44-10 EXPLODED VIEW



NO	PART NAME	NO	PART NAME	NO	PART NAME
1	STOCK	38	VALVE 2	75	POINTER SPRING
2	BUTT PLATE	39	16*2 O-RING	76	POINTER
3	SOFT BUTT PLATE	40	AIR BORE BERTH	77	POINTER LEVER
4	BUTT PLATE BUSH	41	MAIN BODY	78	POINTER LEVER SCREW
5	BUTT PLATE SCREW	42	M4*4 SCREW	79	MAGAZINE LEVER
6	STOCK SCREW	43	HAMMER	80	MAGAZINE LEVER WASHER
7	STOK CONNECTION WASHER	44	HAMMER SCREW	81	MAGAZINE LEVER PIN
8	STOK CONNECTION SCREW	45	HAMMER WASHER	82	MAGAZINE LEVER MOVEMENT PART
9	TRIGGER SPRING	46	HAMMER SPRING	83	MECHANISM
10	SEAR 1	47	SPRING FOLLEWER	84	BARREL CONNECTION SCREW
11	TRIGGER SEAR PIN	48	SAFETY SPRING	85	MAGAZINE STOP PIN
12	SEAR 2	49	SAFETY BALL	86	MAGAZINE COVER
13	SEAR 3	50	SAFETY	87	MAGAZINE COVER SCREW
14	TRIGGER CASE	51	FRONT SIGHT FIBER	88	MAGAZINE STOP PART
15	TRIGGER CASE PIN	52	FRONT SIGHT ADJUSMENT PLASTIC	89	SEAR 1
16	TRIGGER TRAVEL SPRING	53	FRONT SIGHT ADJUSMENT SCREW	90	TRIGGER SEAR SPRING
17	TRIGGER	54	FRONT SIGHT ADJUSMENT PIN	91	PIN 5
18	TRIGGER GUARD SCREW	55	FRONT SIGHT ADJUSMENT SCREW PIN	92	REAR SIGHT SPRING
19	STOK CONNECTION SCREW	56	14*1.5 O-RING	93	REAR SIGHT BODY
20	TRIGGER GUARD	57	BARREL	94	REAR SIGHT PIN
21	TRIGGER TRAVEL SCREW	58	CLEAT CONNECTION SCREW	95	SEAR 2
22	TRIGGER PIN	59	CLEAT	96	REAR SIGHT FIBER
23	TRIGGER PULL ADJUSMENT SCREW	60	31*2 O-RING	97	RER SIGHTBALL
24	TRIGGER PULL ADJUSMENT WASHER	61	FRONT SIGHT BODY	98	UP-DOWN SCREW
25	TRIGGER PULL ADJUSMENT SPRING	62	FRONT SIGHT TRAVELLER	99	LEFT-RIGHT SCREW
26	MANDOMETER WASHER	63	PELLET PORT O-RING	100	TRIGGER SPRING
27	MANDOMETER O-RING	64	BARREL O-RING	101	24*2.2 O-RING
28	VALVE 1	65	MAZINE STOP PIN	102	1.5*1 ORING
29	VALVE 1 WASHER	66	M3*12 SCREW	103	5*1 O-RING
30	VALVE 1 SPRING	67	MAZINE STOP PIN SCREW	104	AIR BUSH
31	VALVE 1 COVER	68	MAGAZINE STOP BALL	105	MAGAZINE STOP PIN SPRING
32	AIR BORE	69	MAGAZINE	106	POINTER BUSH
33	VALVE 2 COVER	70	COCKING LEVER	107	POINTER BUSH SCREW
34	VALVE 2 SPRING	71	HAMMER SEAR PIN	108	SEAR 3 SPRING
35	VALVE 2 POINTER	72	HAMMER SEAR	109	MECHANISM CONNECTION SCREW
36	VALVE 2 WASHER	73	MAGAZINR O-RING	110	M5 NUT
37	VALVE 2 WASHER O-RING	74	POINTER BERTH	111	M4 NUT

NO	PART NAME	NO	PART NAME	NO	PART NAME
1	KUNDAK	38	HAVA ÇIKIŞ VALFİ GÖVDESİ	75	SARI KİNE YAYI
2	SERT TABAN LASTIGI	39	16*2 ORİNG	76	SARI KİNE
3	YUMUSAK TABAN LASTIGI	40	TÜP YATAĞI	77	SARI KİNE KOLU
4	YUMUSAK TABAN LASTIGI BURCU	41	GÖVDE	78	SARI KİNE KOLU VİDASI
5	YUMUSAK TABAN LASTIGI CIVATASI	42	M4*4 VİDA	79	MAGAZİN KOLU
6	TÜP YATAK VİDASI	43	ÇEKİÇ	80	MAGAZİN KOLU BURCU
7	KUNDAK BAĞLANTI CIVATASI BURCU	44	ÇEKİÇ SETSKURU	81	MAGAZİN KOLU İTİCİ PİMİ
8	KUNDAK BAĞLANTI CIVATASI	45	ÇEKİÇ RONDELASI	82	MAGAZİN KOLU HAREKET SACI
9	TETİK YAYI	46	ÇEKİÇ YAYI	83	MEKANİZMA
10	1.NOLU TIRNAK	47	YAY KLAVUZU	84	NAMLU BAĞLANTI SETSKURU
11	TETİK TIRNAK PİMİ	48	EMNİYET YAYI	85	MAGAZİN STOBU PİMİ
12	2.NOLU TIRNAK	49	EMNİYET BÜLYASI	86	MAGAZİN KAPAĞI
13	TETİK DUSURME KOLU	50	EMNİYET GÖVDESİ	87	MAGAZİN KAPAĞI CIVATASI
14	TETİK KASASI	51	ARPAÇIK FOSFORU	88	MAGAZİN STOBU
15	TETİK GRUBU SABİTLEME PİMİ	52	ARPAÇIK AYAR PLASTİĞİ	89	M4*4 CIVATA
16	İSTİNAT YAYI	53	ARPAÇIK ÇİTÇİT SETSKURU	90	GEZ ALT PLASTİĞİ
17	TETİK	54	ARPAÇIK AYAR PİMİ	91	GEZ ZAMAĞI
18	KORKULUK BAĞLANTI VİDASI	55	ARPAÇIK AYAR VİDASI PİMİ	92	GEZ PİMİ
19	KUNDAK ARKA BAĞLANTI VİDASI	56	14*1.5 ORİNG	93	GEZ CIVATASI
20	KORKULUK	57	NAMLU	94	GEZ CIVATASI YAYI
21	İSTİNAT VİDASI	58	KELEPÇE BAĞLANTI VİDASI	95	GEZ FOSFOR PLASTİĞİ
22	TETİK PİMİ	59	KELEPÇE	96	GEZ FOSFORU
23	SERTLİK AYAR VİDASI	60	31*2 ORİNG	97	GEZ TAMBURU
24	SERTLİK AYAR VİDASI BURCU	61	ARPAÇIK GÖVDESİ	98	GEZ BÜLYASI
25	SERTLİK AYAR VİDASI KONTRA YAYI	62	ARPAÇIK TAMBURASI	99	GEZ GÖVDESİ
26	MANOMETRE BURCU	63	SACMA YATAĞI TAMBURASI	100	GEZ YAYI
27	MANOMETRE ORİNGİ	64	NAMLU ORİNGİ	101	24*2.5 ORİNG
28	HAVA GİRİŞ VALFİ	65	MAGAZİN SABİTLEME PİMİ	102	1.5*1 ORİNG
29	HAVA GİRİŞ VALFİ SİBOBU	66	M3*12 VİDA	103	5*1 ORİNG
30	HAVA GİRİŞ VALFİ YAYI	67	MAGAZİN SABİTLEME PİMİ SAPLAMASI	104	HAVA GEÇİŞ BURCU
31	HAVA GİRİŞ VALFİ KAPAĞI	68	MAGAZİN SABİTLEME PİMİ TOPUZU	105	MAGAZİN SABİTLEME PİMİ YAYI
32	TÜP BORUSU	69	MAGAZİN	106	SARI KİNE BURCU
33	HAVA ÇIKIŞ VALFİ KAPAĞI	70	KOL	107	SARI KİNE BURCU CIVATASI
34	HAVA ÇIKIŞ VALFİ YAYI	71	ÇEKİÇ TIRNAK PİMİ	108	TETİK DÜŞÜRME KOLU YAYI
35	HAVA ÇIKIŞ VALFİ KİNESİ	72	ÇEKİÇ TIRNAĞI	109	MEKANİZMA BAĞLANTI VİDASI
36	HAVA ÇIKIŞ VALFİ SİBOBU	73	MAGAZİN ORİNGİ	110	M5 SOMUN
37	HAVA ÇIKIŞ VALFİ SİBOBU ORİNGİ	74	SARI KİNE MERKEZLEME YATAĞI	111	M4 SOMUN