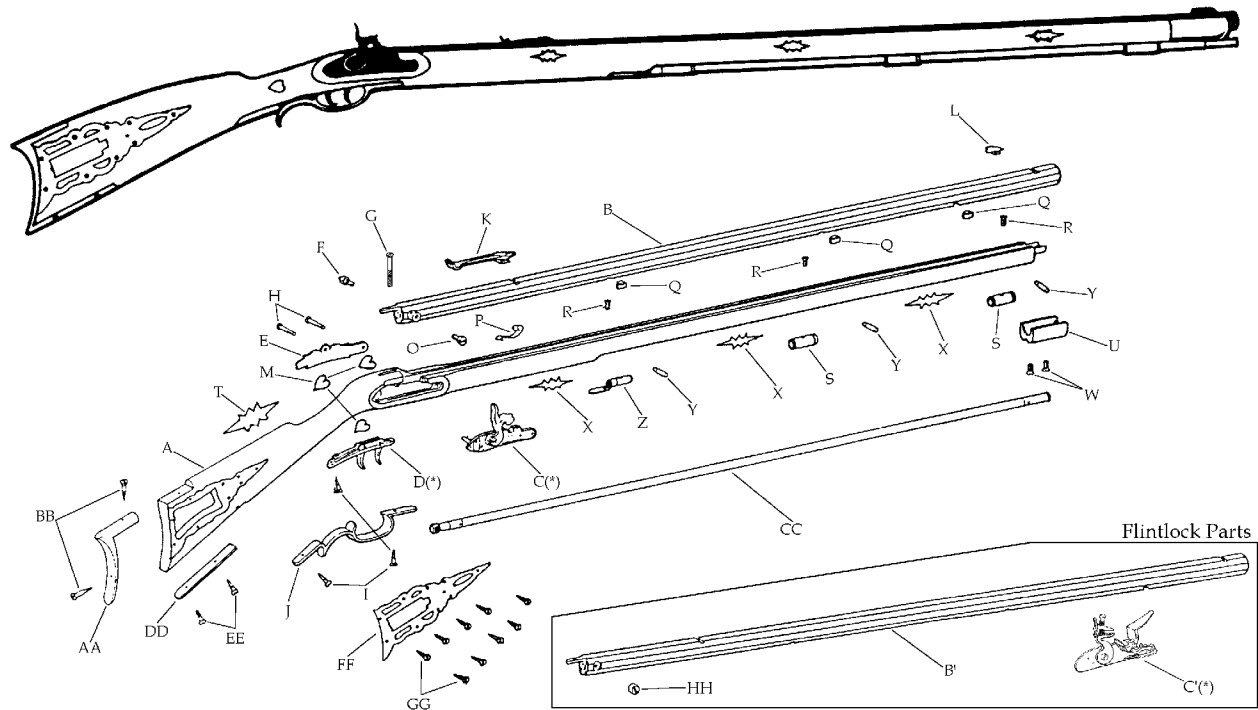


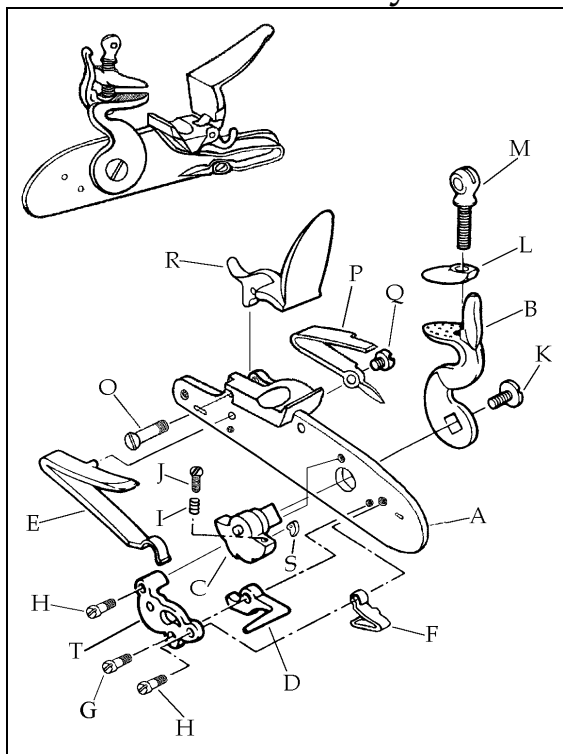
| | | |
|---|--|---|
| <p style="font-size: 1.2em; margin: 0;">Models:</p> | <p style="font-size: 1.5em; margin: 0;">- Pennsylvania Rifle -</p> | <p style="font-size: 1.5em; margin: 0;">R-2095 R-2105</p> <p style="font-size: 0.9em; margin: 0;">.45 cal. flint. 1-66" .45 cal. perc. 1-66"</p> <p style="font-size: 0.9em; margin: 0;">Blued Barrel Blued Barrel</p> |
|---|--|---|



| Description | | Reference | Description | | Reference |
|-------------|---|-----------|-------------|--|-----------|
| A | Stock Walnut (Flintlock) (Finished)..... | FCS20901 | P | Ramrod Retainig Spring..... | 20621 |
| | Stock Walnut (Percussion) (Finished)..... | FCS21001 | Q | Barrel Tenon (3)..... | 20233 |
| B | Barrel Assembly Blued (Finished) (Length 40 1/4") | | R | Ramrod Thimble Screw (3)..... | 20839 |
| | .45 cal. perc. (twist 1-66")..... | FB210025 | S | Front & Middle Thimble (2)..... | 20613 |
| B' | Barrel Assembly Blued (Finished) (Length 40 1/4") | | T | "Hunter's Star" Large (Brass)..... | 21037 |
| | .45 cal. flint. (twist 1-66")..... | FB209025 | U | Nose Cap (Brass)..... | 21015 |
| C | Percussion Lock..... | 20603 | W | Nose Cap Screw (2)..... | 20214 |
| C' | Flintlock..... | 23503 | X | "Hunter's Star" Small (Brass) (6)..... | 21039 |
| D | Trigger Assembly..... | 20622R | Y | Barrel Tenon Pin. (2)..... | 20218 |
| E | Side Plate (Brass)..... | 21016 | Z | Rear Thimble (Brass)..... | 21014 |
| F | Nipple Percussion Only..... | 20608 | AA | Butt Plate (Brass)..... | 20226 |
| G | Tang Screw..... | 20609 | BB | Butt Plate Screw (2)..... | 20627 |
| H | Side Plate Screw (2)..... | 20820 | CC | Ramrod Assembly..... | 21028 |
| I | Trigger Guard Screw (3)..... | 20624 | DD | Toe Plate (Brass)..... | 21031 |
| J | Trigger Guard (Brass)..... | 20623 | EE | Toe Plate Screw (2)..... | 20624 |
| K | Rear Sight Assembly..... | 20610 | FF | Patchbox (Brass)..... | 21035 |
| L | Front Sight..... | 20611 | GG | Patchbox Screw (9)..... | 400024 |
| M | Heart (3) (Brass)..... | 21038 | HH | Touch Hole Insert -Flintlock Only..... | 20534 |
| O | Bolster Screw -Percussion Only..... | 20605 | | | |

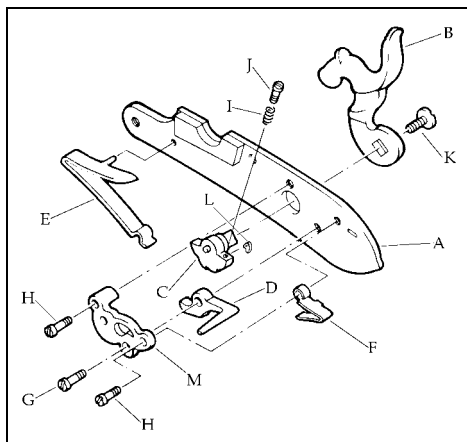
(*) Exploded view at the reverse.

Flintlock Assembly - Ref. 23503



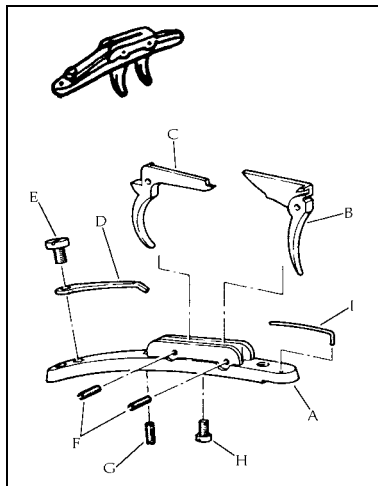
| Description | Reference |
|---------------------------------------|-----------|
| A Lock Plate..... | 70623 |
| B Hammer..... | 70624 |
| C Tumbler..... | 70603 |
| D Sear..... | 70504 |
| E Mainspring..... | 70505 |
| F Sear Spring..... | 70506 |
| G Sear Screw..... | 70514 |
| H Sear Spring & Bridle Screw (2)..... | 70515 |
| I Sear Adjusting Screw Spring..... | 70520 |
| J Sear Adjusting Screw..... | 70518 |
| K Hammer Screw..... | 75512P |
| L Top Jaw..... | 70309 |
| M Top Jaw Screw..... | 70513L |
| O Frizzen Screw..... | 70627 |
| P Frizzen Spring..... | 70625 |
| Q Frizzen Spring Screw..... | 70628 |
| R Frizzen..... | 70626 |
| S Fly..... | 70611 |
| T Bridle..... | 70508 |

Percussion Lock Assembly - Ref. 20603



| Description | Reference |
|---------------------------------------|-----------|
| A Lock Plate..... | 70501 |
| B Hammer..... | 70602 |
| C Tumbler..... | 70603 |
| D Sear..... | 70504 |
| E Mainspring..... | 70505 |
| F Sear Spring..... | 70506 |
| G Sear Screw..... | 70514 |
| H Sear Spring & Bridle Screw (2)..... | 70515 |
| I Sear Adjusting Screw Spring..... | 70520 |
| J Sear Adjusting Screw..... | 70518 |
| K Hammer Screw..... | 75512P |
| L Fly..... | 70611 |
| M Bridle..... | 70508 |

Trigger Assembly - Ref. 20622R



| Description | Reference |
|---------------------------------------|-----------|
| A Trigger Plate..... | 60601R |
| B Front Trigger..... | 60602 |
| C Rear Trigger..... | 60603 |
| D Rear Spring..... | 60604R |
| E Rear Spring Screw..... | 60606 |
| F Trigger Pin (2)..... | 60609 |
| G Rear Trigger Adjustment Screw..... | 60608 |
| H Front Trigger Adjustment Screw..... | 60607 |
| I Front Spring..... | 60605 |